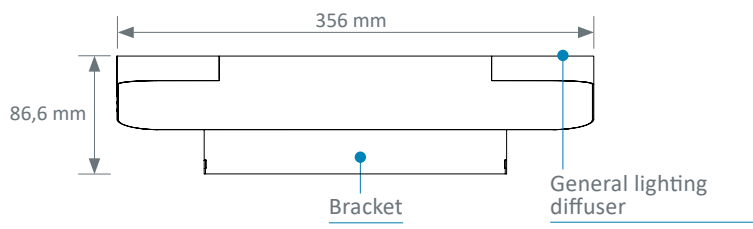


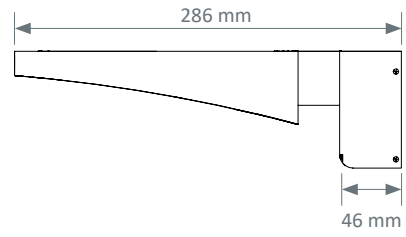


TECHNICAL FEATURES

Front view



Side view



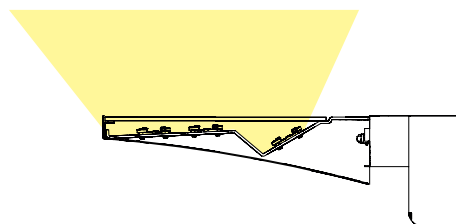
Colours

	White RAL 9016	Grey RAL 9006
LUMIA	●	●

CONTROLLED AND EFFICIENT LIGHTING

General lighting

- Clear glass diffuser
- Aluminum reflector



Lighting study

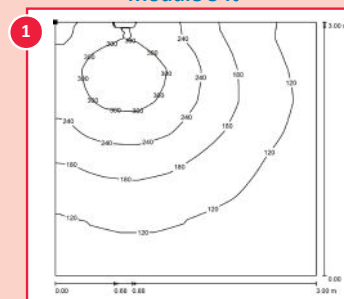
- Standard room
- Dimensions of the room: 3m x 3 m, ceiling clearance 2.5 m
- Reflection coefficients: ceiling 7, walls 5, and floor 3
- Coefficient of depreciation 0.83
- Recommended average illumination level : ambient 100 lux

General lighting

Virtual general lighting plane of a surface equal to the one of the room, located 0.85 m above the floor (3 m x 3 m for a single room).

LED

Module 3 ft



Consumption	37,6 W
Average lighting	171 lx

Lighting power

Lighting	Modules power	Types of sources	Color Temperature	Luminous Flux ⁽¹⁾	Consumption	System Efficiency	Driver(s)	Efficiency energy class
General lighting	32,3 W (3 Ft)	LED	3000 K 4000 K	5531 lm	37,6 W	147,3 lm/W	Fixed / DALI	A ↑ G D

⁽¹⁾ All the luminous flux indicated in the brochure are based on the flux of the LED modules also known as system flux.

Luminaire output flux = (Module flux) x (optical efficiency), the optical efficiency of the luminaire is indicated in the Eulumdat file (LDT line 23) available for download on our website or on request.

Norms & recommendations

- EN ISO 9001 and EN ISO 13485: Quality management systems
- Low Voltage Directive (LVD) 2014/35/UE
- Directive 2014/30/UE: Electromagnetic Compatibility (EMC)
- EN 60598: Luminaires - Part 1: General requirements and tests - Part 2-25: Luminaires for use in clinical areas of hospitals and health care buildings
- Article EC5 safety regulation against the risks of fire and panic in public buildings
- European rules for caring centers lighting

Bed head units, Wall lighting units, Ceiling pendants, Suspended Beams & Columns,
Special care bed head units, Sealed lightings, Medical gas monitoring & Biomedical Accessories

